



PRODUCT RANGE:

CONCORD SPORTS TIMBER ACOUSTIC PANELLING



# Contents:

---

**01** Perforated / Slotted Timber Acoustic Solutions

**02** Product Features

**03** Typical Details / Fixing Options

---

## 01 Slatted Timber Solutions

### Product Info

- Split Baton hanging methodology for wall panels
- Our slatted timber acoustic systems can complement a wide range of room types. They are beneficial both acoustically and aesthetically.
- For ceilings, wall paneling & balustrades etc.
- Sport England preferred colours available through our Laminate range or with a Painted RAL finish.
- Available up to class C performance with 50mm build-out
- Fire resistant core boards
- Capping and Skirting available

Perforated panels are manufactured in a range perforation patterns to create a level of open surface area to enable the absorption of sound.

Birch plywood or CPL/HPL Laminates and painted finishes available on FR MDF core.

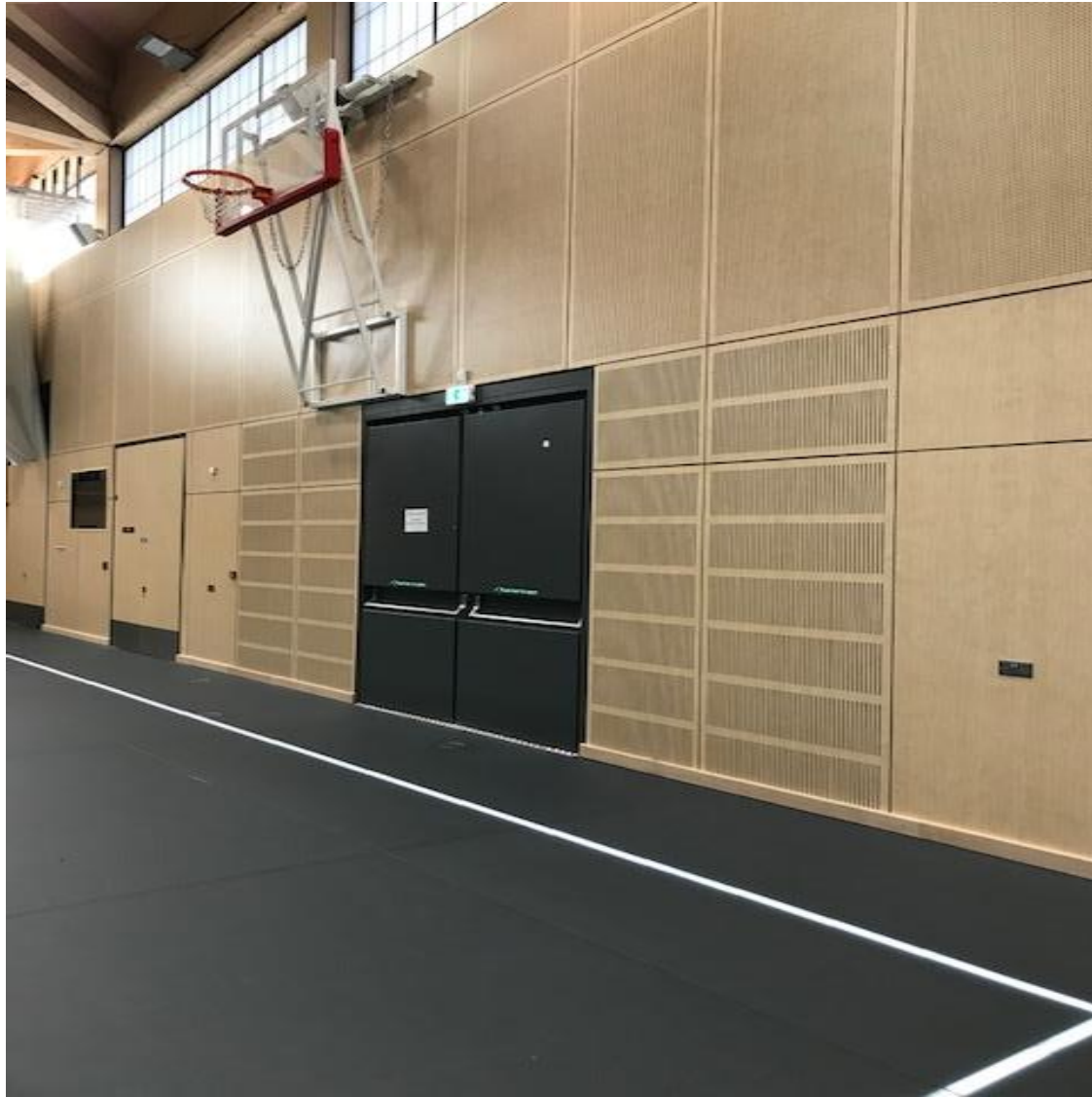


## 02 Product Features

---

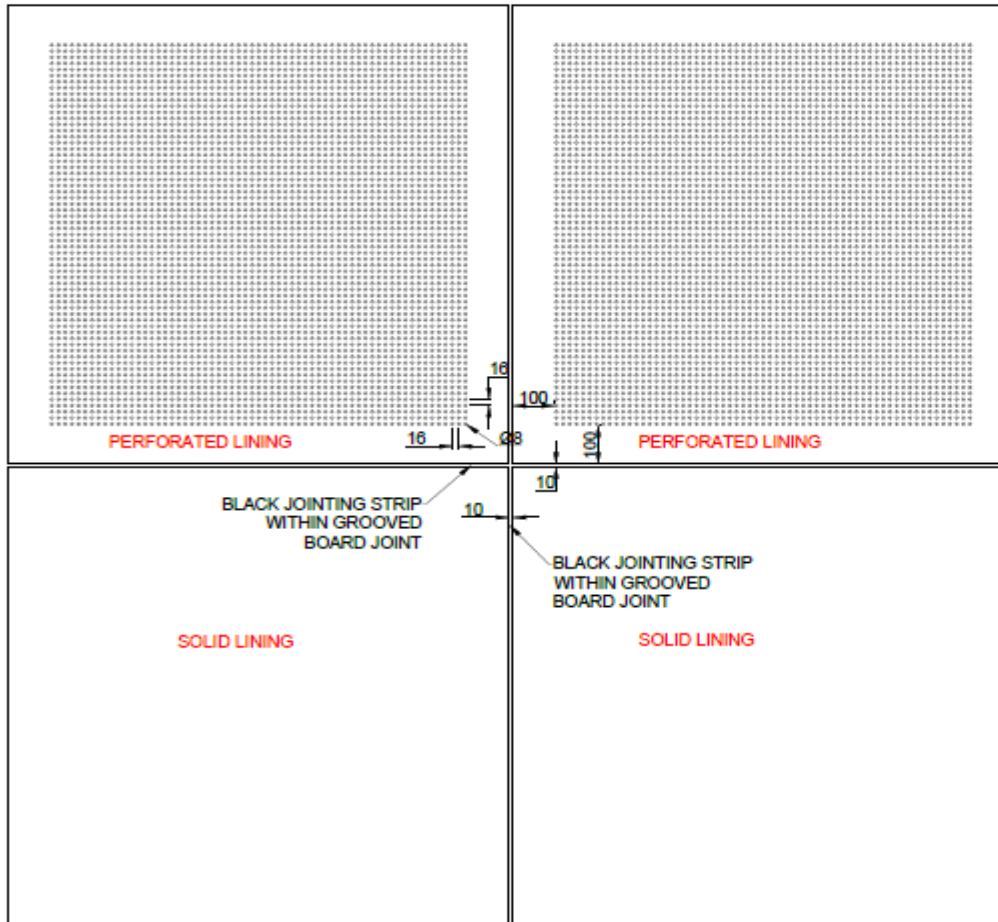
<b>NBS REF:</b> K13/K40	<b>Rigid Sheet Linings and Panel</b>
<b>Product:</b>	Concord Sports Range – Timber Absorption Wall Panels
<b>Manufacturer:</b>	London Wall Design Acoustic Solutions
<b>Web:</b>	<a href="http://www.londonwall.co.uk">www.londonwall.co.uk</a>
<b>Product Ref:</b>	Concord Sports Range - Timber Absorption Wall Panels
<b>Standard Panel Sizes:</b>	3000mm x 1200mm / 2400mm x 1200mm / 1200mm x 1200mm (project specific sizes on request)
<b>Perforations/Slots:</b>	6mm, 8mm, 10mm & 12mm or routed slots
<b>Hole Centres:</b>	16mm, 32mm & 64mm (project specific size/patterns available)
<b>Finishes:</b>	Birch Plywood, Veneers, CPL/HPL Laminates & Painted to std a RA colour or to a Sport England colour
<b>Fabric Backing:</b>	Black open weave/non-woven acoustically transparent backing
<b>Panel Jointing:</b>	5-10mm between boards spliced with a black jointing strip.
<b>Core Materials:</b>	FR Plywood or FR MDF
<b>Acoustic Performance:</b>	Class C (50mm build-out)
<b>Fire Resistance:</b>	Class 1 or Class 0 (Euro-Class B) SSF
<b>Insulation:</b>	Rockwool RWA45 30mm deep high density mineral wool 45kgs/per M3 – Euro class A1 Fire Performance



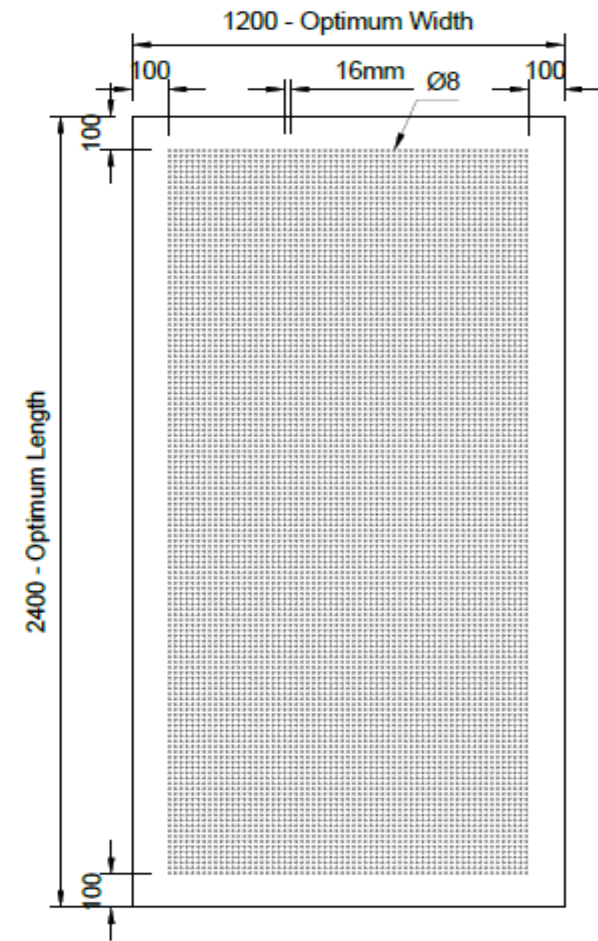




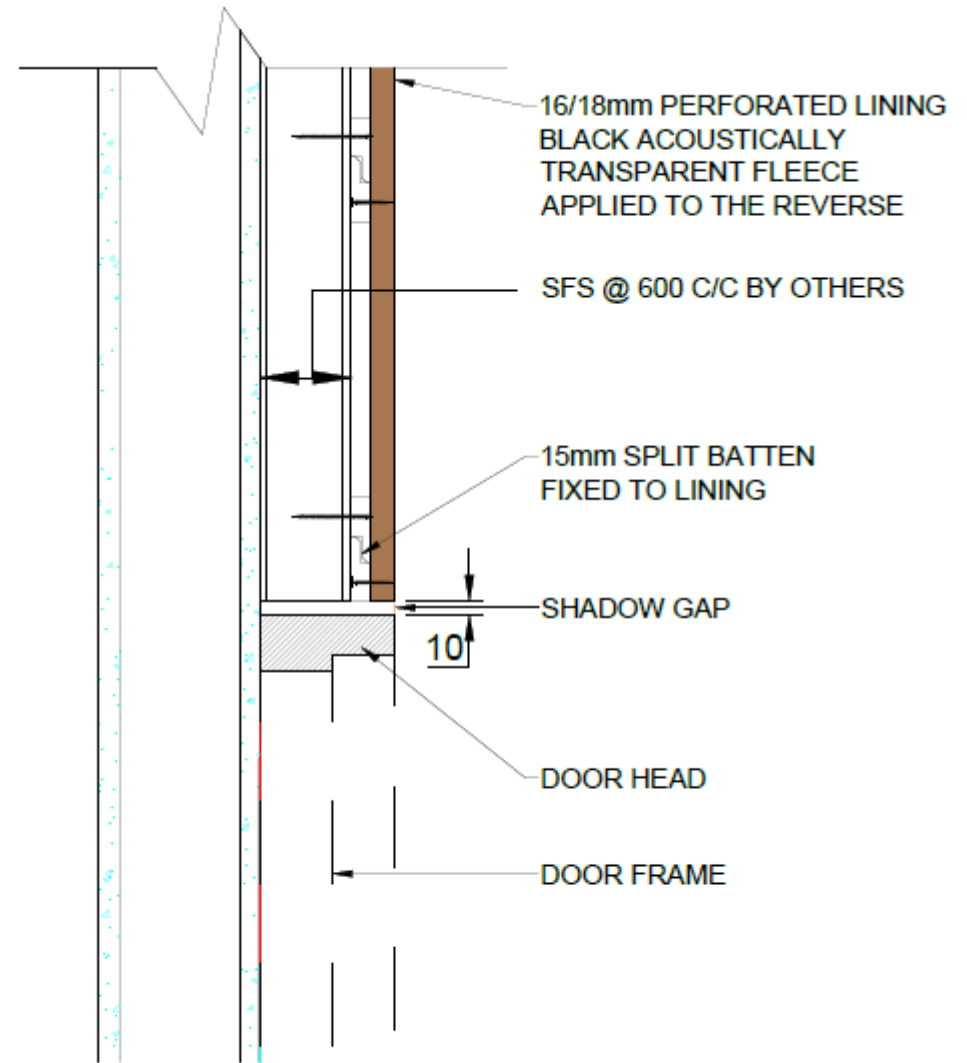
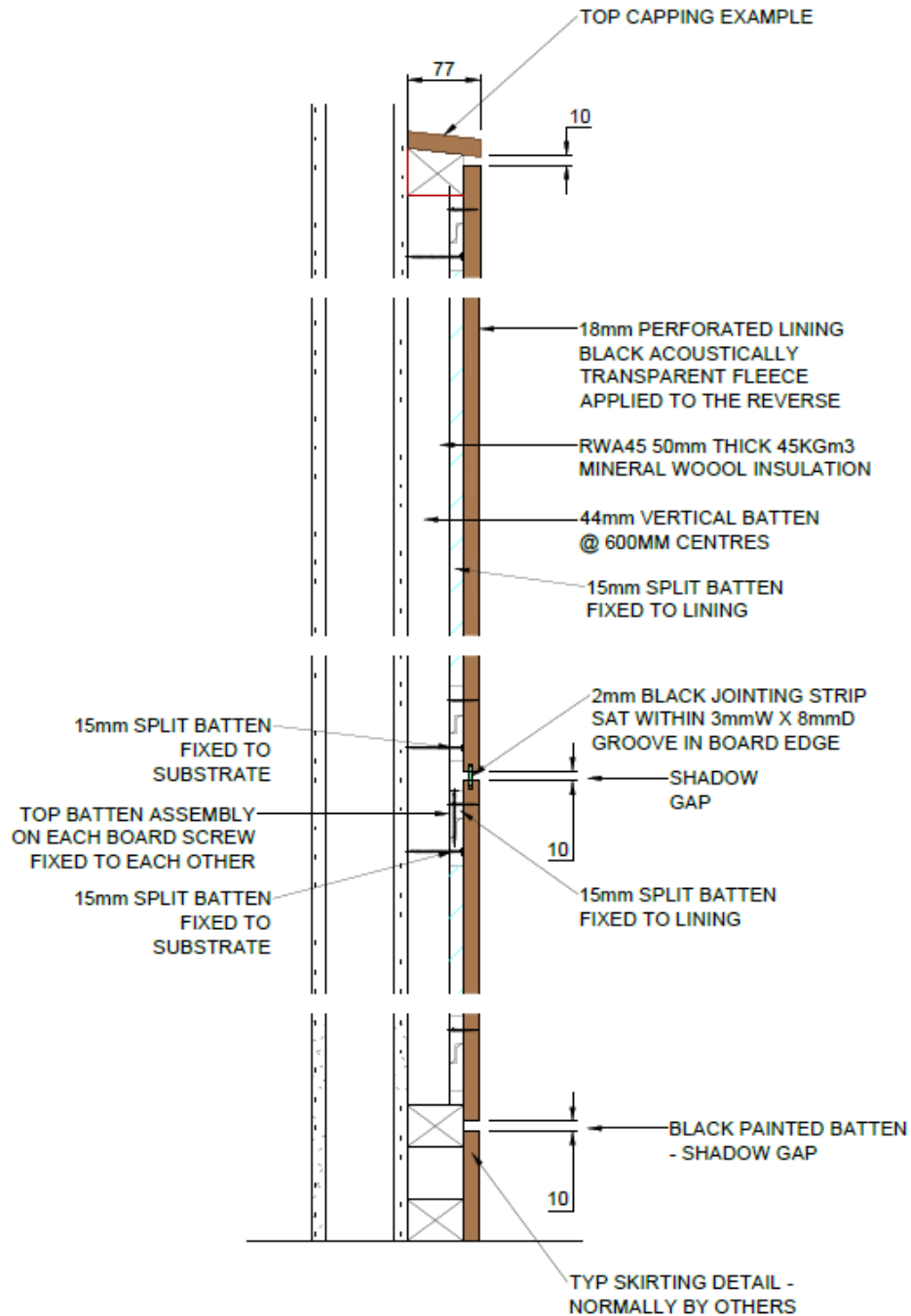
### 03 Fixing Method - Face Fix



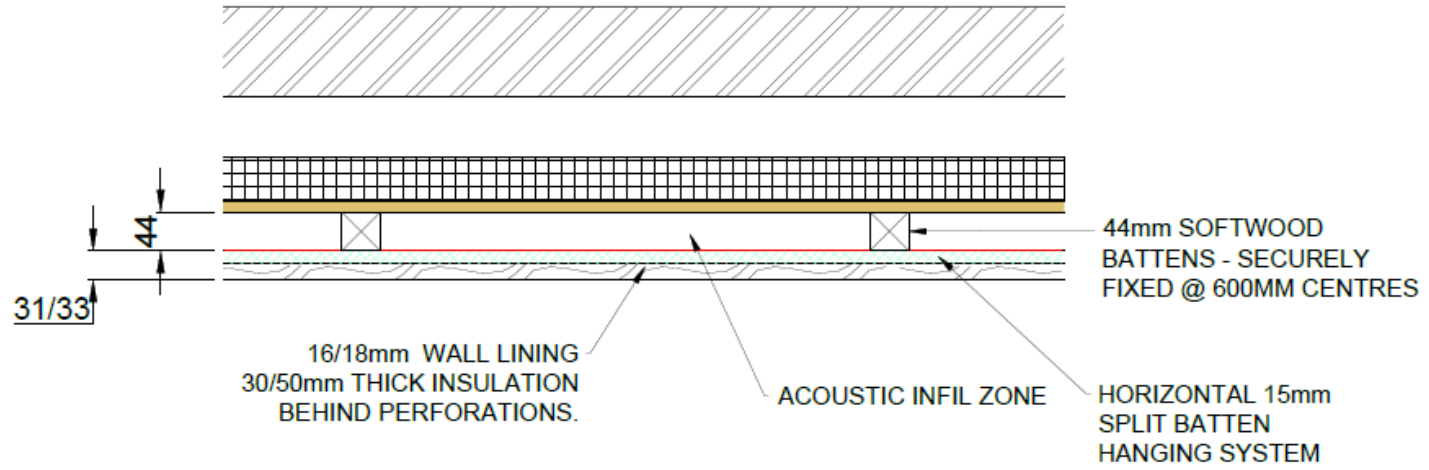
① TYPICAL FACE DETAIL  
SCALE: N/A



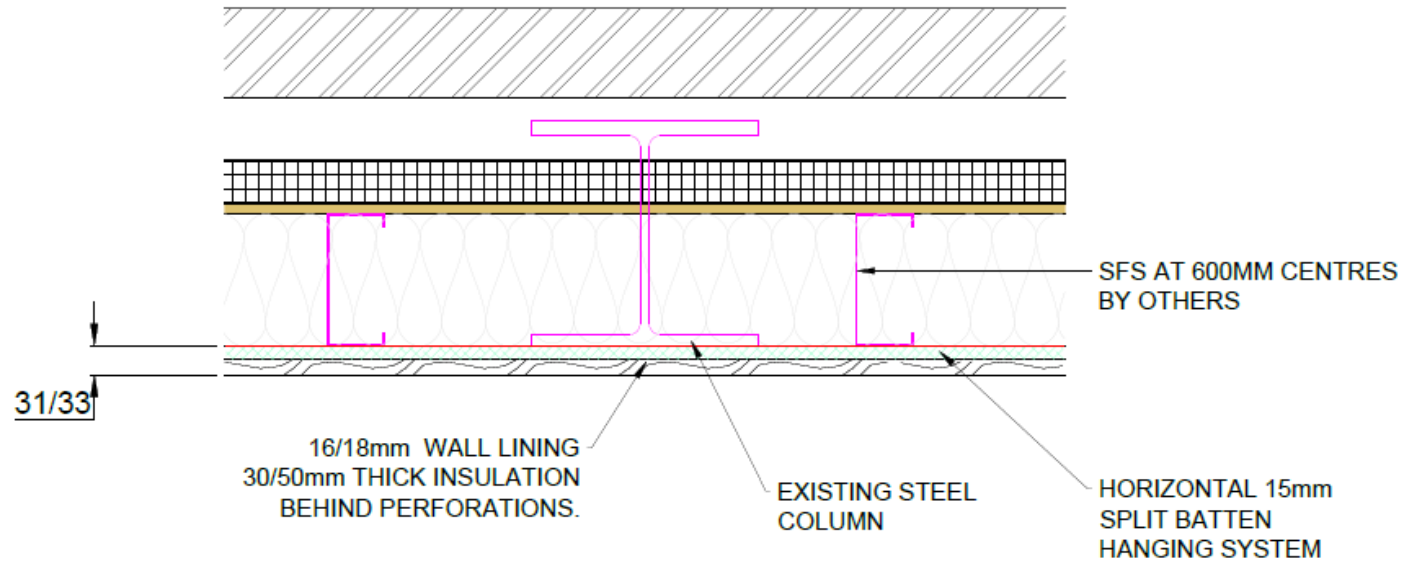
② TYPICAL FACE ELEVATION - CLASS C  
SCALE: N/A



6 TYPICAL SECTION THROUGH INTERNAL DOOR  
SCALE: N/A



③ TYPICAL PLAN SECTION BUILD UP - PLASTERBOARDED WALL  
SCALE: N/A



④ TYPICAL PLAN SECTION BUILD UP - DIRECT TO SFS  
SCALE: N/A



L O N D O N W A L L

**London Wall Design Ltd**  
**ACOUSTIC SOLUTIONS DIVISION**

63 Barwell Business Park, Leatherhead Road, Chessington, Surrey, KT9 2NY  
T: 020 8391 8750, W: [www.londonwall.co.uk](http://www.londonwall.co.uk)