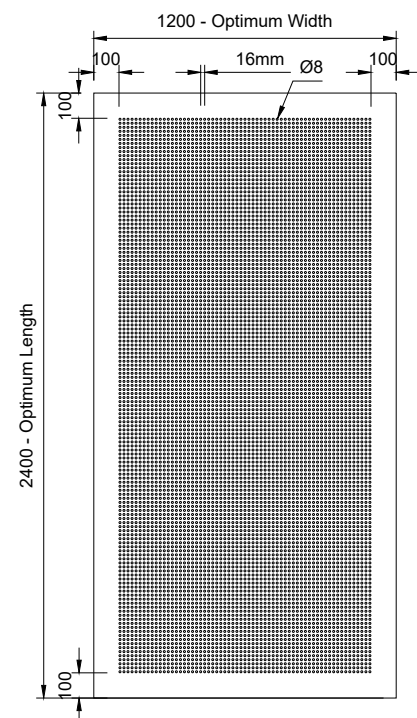
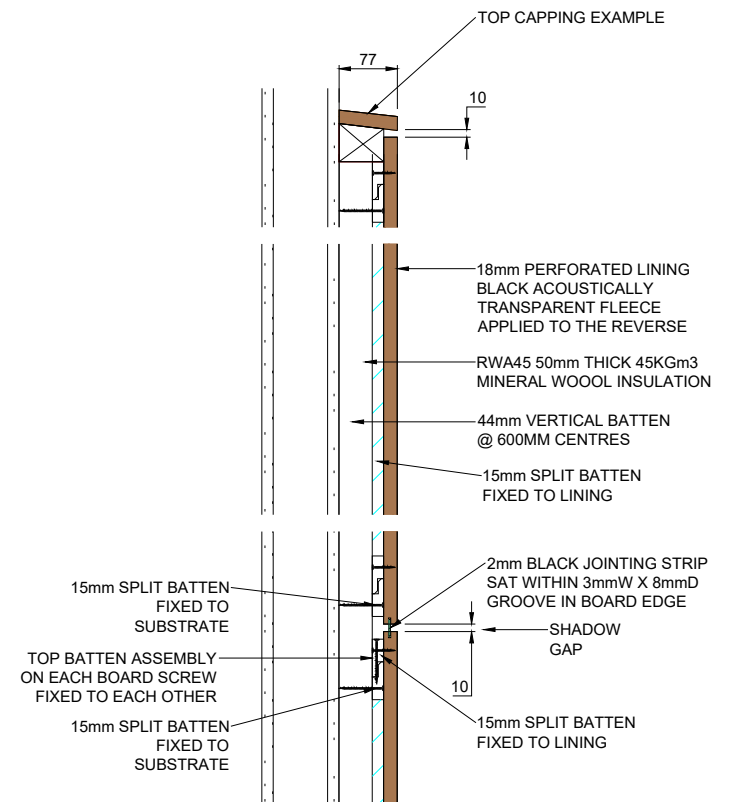


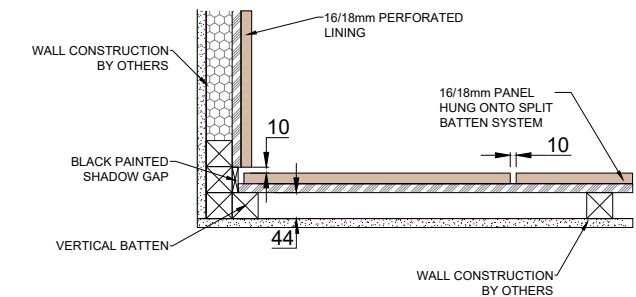
1 TYPICAL FACE DETAIL
SCALE: N/A



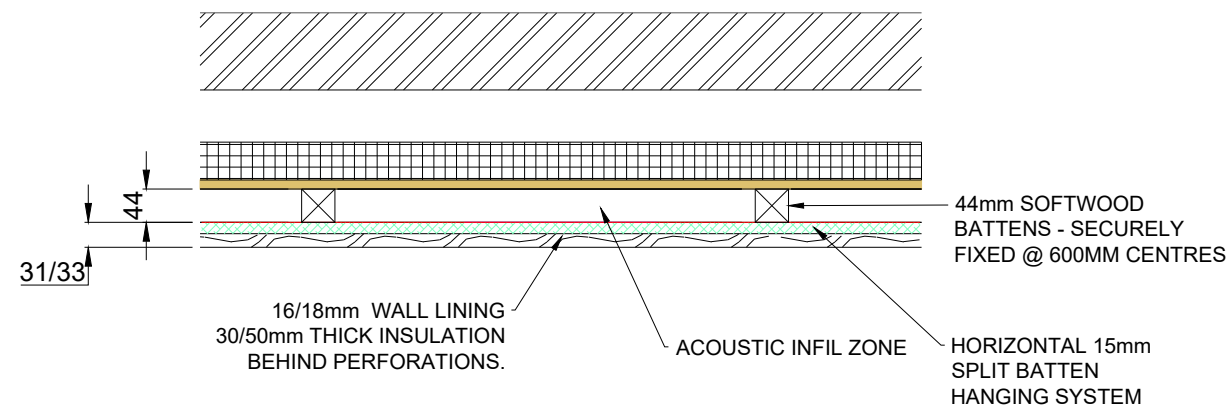
2 TYPICAL FACE ELEVATION - CLASS C
SCALE: N/A



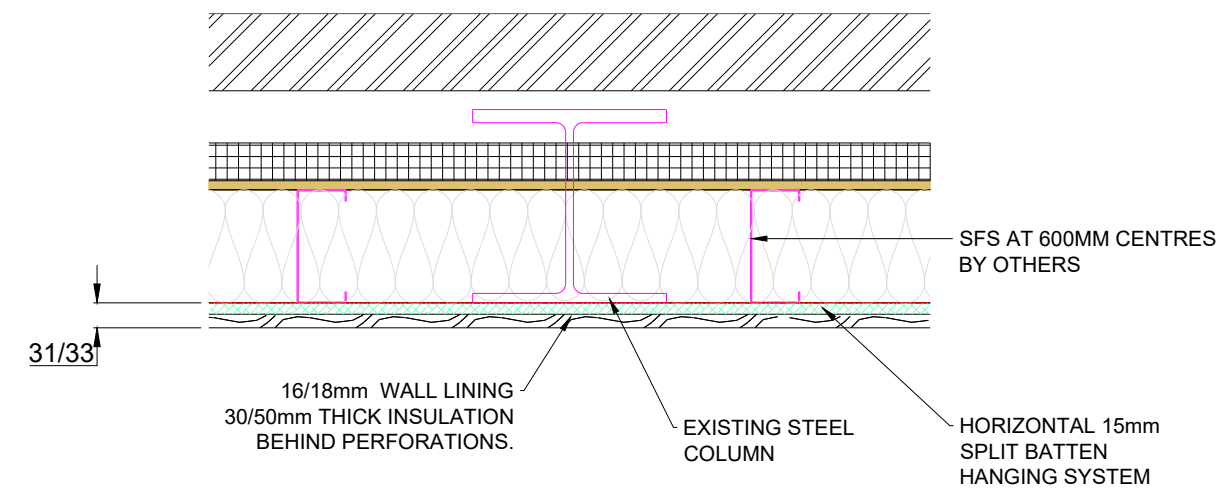
5 TYPICAL SECTION THROUGH
SCALE: N/A



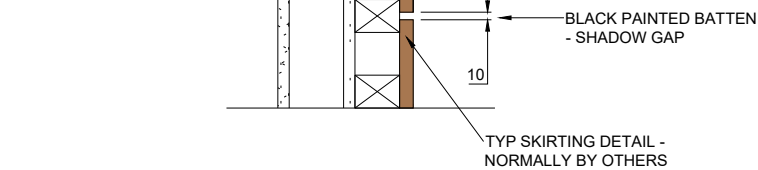
7 TYPICAL SECTION THROUGH INTERNAL CORNER
SCALE: N/A



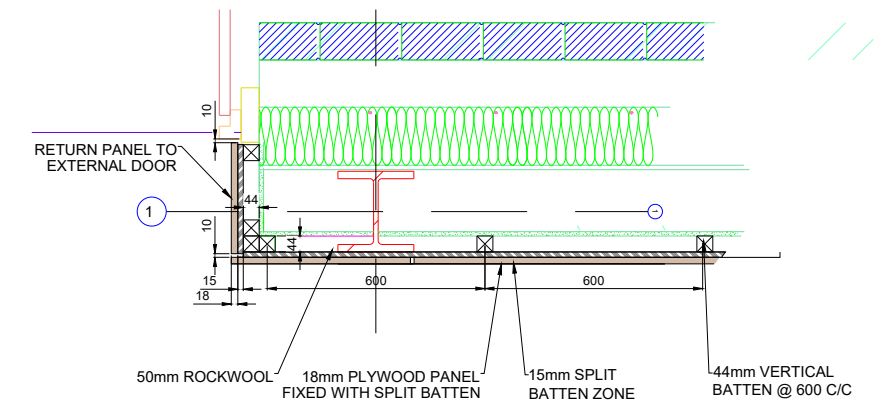
3 TYPICAL PLAN SECTION BUILD UP - PLASTERBOARDED WALL
SCALE: N/A



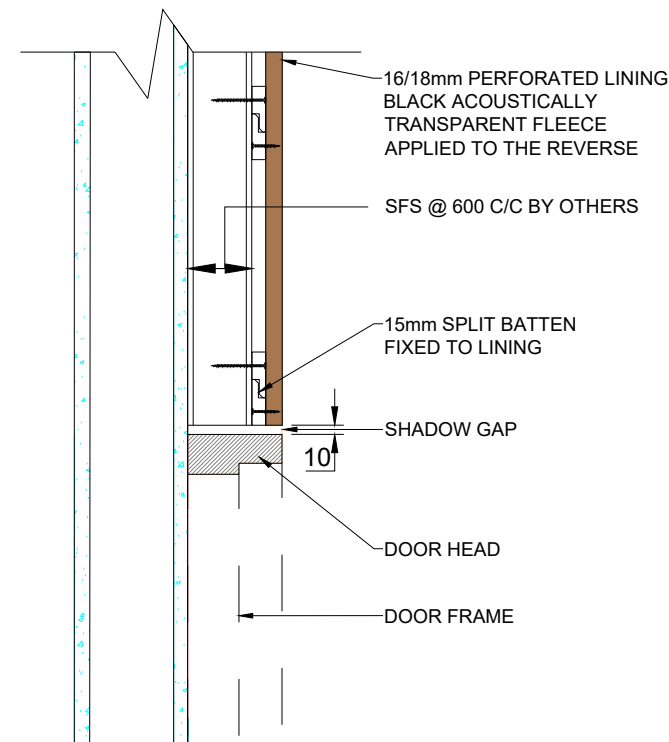
4 TYPICAL PLAN SECTION BUILD UP - DIRECT TO SFS
SCALE: N/A



6 TYPICAL SECTION THROUGH INTERNAL DOOR
SCALE: N/A



8 TYPICAL SECTION THROUGH RETURN BOARD
SCALE: N/A



PRODUCT SPEC - CONCORD PERFORATED WALL PANELS

FACE FINISHES:	SEE FINISHES BROCHURE
PERFORATIONS:	8 / 10mm HOLES
BACKING:	BLACK ACOUSTICALLY TRANSPARENT FLEECE
CORE:	16 / 18mm MDF/PLY, FIRE CLASS 0 / 1
ACOUSTIC CLASS:	CLASS B/C
FIXING METHOD:	44w X 44d PSE SOFTWOOD & 15mm SPLIT BATTEN
INSULATION:	RW3 / RWA45 - 30 / 50mm MINERAL WOOL
SHADOW GAP:	10mm HORIZONTALLY AND VERTICALLY

London Wall Design Ltd
Acoustic Solutions Division
63 Barwell Business Park
Leatherhead Road
Chessington, Surrey KT9 2NY
Tel : +44 (0) 20 8391 8750
Fax : +44 (0) 20 8391 8751
E-Mail : Technical@londonwall.co.uk

TITLE:
**CONCORD PERFORATED WALL
PANELS - TECHNICAL DETAILS**

DATE: 01/01/22	DRAWN BY: DP	SCALE: AS DRN
-------------------	-----------------	------------------

DRAWING NUMBER: LWA-CON-001	REV: A
--------------------------------	-----------